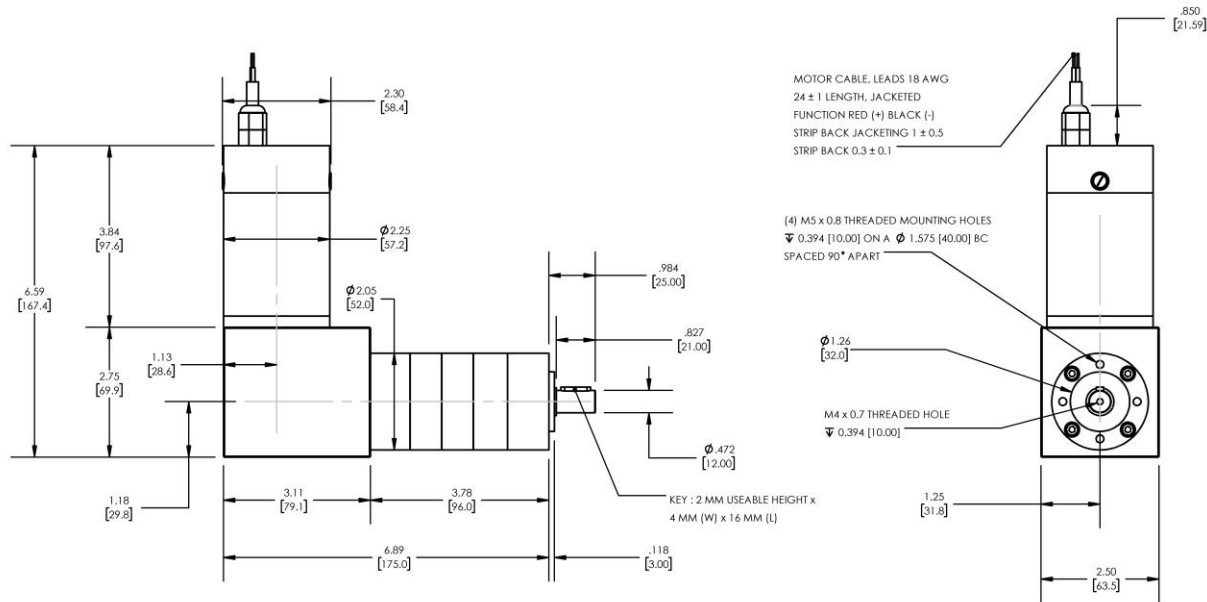


Model Number:

MMP TM57-60V GRA52-1223



DIMENSIONS ARE INCHES [MM] UNLESS OTHERWISE STATED

PLANETARY GEARMOTOR OUTPUT PARAMETERS:	VALUE	UNITS	TOLERANCE
Gearhead Ratio (exact)	1223.41 : 1		
Gearhead Shaft Output Speed (at full-load)	3.7	RPM	MAX
Gearmotor Rated Continuous Torque	442	In-Lbs	MAX
Gearmotor Rated Peak Torque	443++	In-Lbs	----
Gearhead Standard Backlash	51	Arc Minutes	MAX
Gearhead Efficiency	65%	----	----
Output Shaft Radial Load Capacity	113	Lbs	MAX
Output Shaft Axial Load Capacity	45	Lbs	MAX
Gearmotor Total Weight	6.5	Lbs	MAX

++ All Peak Torque values are dependent upon duty. Contact our sales office for details.

DC MOTOR PERFORMANCE PARAMETERS:	VALUE	UNITS	TOLERANCE
Rated DC Voltage	60	DC VOLTS	----
Rated Continuous Current	0.80	AMPERES	----
No-Load Speed	5000	RPM	MAX
Rated Speed	4520	RPM	+/- 15%
Rated Continuous Power Out	30	WATTS	+/- 15%
Rated Continuous Torque	8.9	OZ-IN	----
Peak Torque (motor only)	90	OZ-IN	----
No-Load Current	0.25	AMPERES	MAX
Back EMF Constant (Ke)	12.0	V/KRPM	+/- 10%
Torque Constant (Kt)	16.2	OZ-IN/AMP	+/- 10%
DC Armature Resistance	7.21	OHMS	+/- 15%
Armature Inductance	10.26	mH	+/- 15%
Armature temperature	155	DEG. C	MAX

NOTES:

- NEMA MOUNTING FLANGE OPTION AVAILABLE - [FOLLOW THIS LINK FOR DETAILS](#)

MIDWEST MOTION PRODUCTS, INC

DESIGN, MANUFACTURING & DISTRIBUTION - MOTION CONTROL EQUIPMENT

www.midwestmotion.com

email: sales@midwestmotion.com